



# NEW CURRICULUM

JANUARY 2016

## CONTENTS

1	Title
2-4	New curriculum
5	Other charges
6	First day
7	Regular day
8	Environment
9-12	Facility
13	School information



悠果教育

[www.YouGoStudy.com](http://www.YouGoStudy.com)

VIVI INC.

# New Curriculum

## ESL GENERAL/INTENSIVE

This course is available to students of all level. Students will take written and oral placement tests on the first day to determine their English level to come up with a more personalized teaching or instructional approach and methodology. ESL GENERAL/INTENSIVE Course is a customized course based on the level test results of Speaking, Listening, Writing, Grammar, Reading and Vocabulary. Students are divided into 8 levels from LOW Beginner to ADVANCED LEVEL.



## SEMI SPARTA

This course is a strict course which is open for Beginner to Advanced students and designed for students who want to improve their English skills dramatically. However, unlike "Sparta course", students who will enroll in semi-Sparta course are allowed to go out of the campus after their 11-hour-class.



## TOEIC/TOEFL/IELTS + ESL

These programs are designed as preparatory courses for students who aim to achieve a high score in TOEIC/TOEFL/IELTS (for work or study purposes). All man to man classes for these courses will be TOEIC/TOEFL/IELTS lessons and the group classes will be ESL lessons. This course focuses not only on specific modules of the test (speaking, reading, listening, and writing), but also improves skills that are being developed in other courses.



# New Curriculum

## NATIVE ESL

NATIVE ESL courses are offered to Upper- Intermediate students. The lessons are offered with a variety of Native English-speaking teachers from United Kingdom, United States of America as well as Australia. This course gives students chance and opportunity to be more familiar with and exposed to western culture while learning how to speak like a Native English speaker. We don't recommend this course for Beginner students for native teachers tend to speak a bit faster compare with Filipino teachers.



## NATIVE MIXED

This course is recommended to students who want to be exposed to Asian and Western culture and also who are planning to go on working holiday or study abroad as university students. This course comprises of 9 classes (4 one-on-one class, 4 group classes) and taking this course would definitely help you increase your vocabulary, listening, and grammar as well as communication comprehension in just a short span of time.



## ESL + GOLF

Students who want to improve their English skills and have fun of playing and enhancing their skills in golf at the same time can enroll in this unique course. The golf program is directed towards all levels of golf, beginning through advanced. This is a hands-on program with each student receiving personal attention from the instructor. The golf course is within walking distance from the school.

\*Affiliated : USGTF, F PGA, WPGA, KPTGA - Inquire more For Golf PRO License.

\*The Golf pro's lesson is 1 hour. Another 2 hours will be self-practice.



悠果教育

www.YouGoStudy.com

# New Curriculum

COURSE	PHI (1:1)	PHI (1:5)	NATIVE (1:1)	NATIVE (1:5)	OPTION Class	SELF- STUDY	TOTAL
GENERAL ESL	3	2	-	1	1	-	7
INTENSIVE ESL	4	3	-	1	1	-	9
SEMI SPARTA	6	1	-	1	1	2	11
TOEIC/TOEFL IELTS + ESL	3	3 ※1	-	1 ※1	1	-	8
NATIVE ESL	-	-	3	4	1	-	8
NATIVE MIXED	2	2	2	2	1	-	9
ESL+GOLF	3	1	-	-	1	-	8 (GOLF-3) ※2
Junior Guardian (A)	4 (3)	2 ※3 (1)	-	- -	- (1)	- -	6 (5)

※1 TOEIC/TOEFL/IELTS: All group classes are ESL lesson.

※2 ESL + GOLF: GOLF lesson 3 hours include 1 hour pro's lesson.

※3 If there is no Junior course student, it might be man to man classes.



悠果教育

www.YouGoStudy.com

# Other charges

1) Security Deposit fee • • • 3,000pesos

2) SSP (Special Study Permit) • • • 6,500pesos

This permit is strictly required and will be valid for 6 months.

3) ACR-I Card • • • 3,000pesos

This card is required for students who will stay in the Philippines for more than 59days.

4) VISA Extension (\*Visa fee depends on the length of stay)

LENGTH		PRICE
4weeks (30days)	NONE	
8weeks (59days)	1st	3,730pesos
12weeks (89days)	2nd	5,000pesos
16weeks (119days)	3rd	3,030pesos
20weeks (149days)	4th	3,030pesos
24weeks (179days)	5th	3,030pesos

5) Utilities – 1,200pesos / 4week

Electricity – We charge the amount used weekly (students can share it with roommates) \*1kw/12pesos

6) Student ID Card • • • 200pesos

7) Textbooks • • • Depending on the student's class, books will be issued and the prices vary.



# First day - Student schedule

8:00am ~ 10:00am	ENTRANCE EXAM Reading, Listening, Speaking
10:20am ~ 11:30am	ORIENTATION
11:30am ~ 12:50pm	LUNCH
1:00pm ~ 4:00pm	SM CLARK Shopping mall ▪ Money Exchange or withdraw
5:00pm	▪ Check Class schedule ▪ Payment
5:30pm ~ 7:00pm	DINNER



悠果教育

[www.YouGoStudy.com](http://www.YouGoStudy.com)



# Regular day - Student schedule

7:20am ~ 8:50am	BREAKFAST
8:00am ~ 8:50am	1st
9:00am ~ 9:50am	2nd
10:00am ~ 10:50am	3rd
11:00am ~ 11:50am	4th
11:30am ~ 12:30pm	LUNCH
1:00pm ~ 1:50pm	5th
2:00pm ~ 2:50pm	6th
3:00pm ~ 3:50pm	7th
4:00pm ~ 4:50pm	8th
5:00pm ~ 5:50pm	Option Class
5:30pm ~ 6:30pm	DINNER
7:00pm ~ 9:00pm	SELF-STUDY *SEMI SPARTA COURSE
~ 11:00pm	CURFEW *Sun-Thursday
~ 10:00pm	CURFEW *Fri and Saturday



悠果教育

www.YouGoStudy.com

# EG Environment



Hospital Drugstore 7 Eleven Jollibee Macdonald Shoppingmall Commercial buildings



# EG Facility



EG academy

EG academy



悠果教育

[www.YouGoStudy.com](http://www.YouGoStudy.com)



# EG Facility



EGACADEMY



EG academy

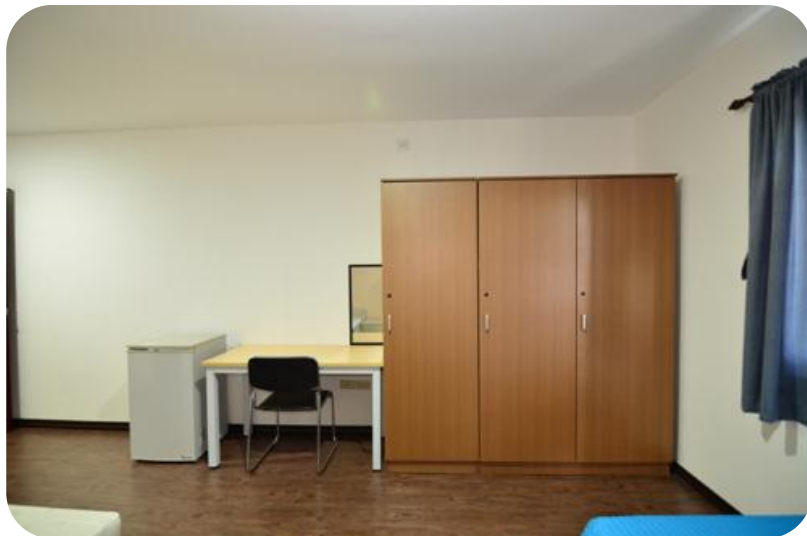


悠果教育

[www.YouGoStudy.com](http://www.YouGoStudy.com)



## EG Facility – 1<sup>st</sup> Dormitory



悠果教育

[www.YouGoStudy.com](http://www.YouGoStudy.com)

## EG Facility – 2nd Dormitory (NEW)





# SCHOOL INFORMATION

<b>NAME</b>	EG Academy ViVi Inc.
<b>ADDRESS</b>	Lot3 Friendship highway BRGY. Cutcut Angeles City, Philippines
<b>PHONE</b>	+63-45-436-1541
<b>NUMBER OF TEACHERS</b>	Summer/Winter season 100(Filipino) & 15(Natives)
<b>CLEANING/LAUNDRY</b>	3 times a week
<b>FACILITIES</b>	Theater, Cafeteria, Study room, Canteen, Public PC, Basketball/Badminton court, Swimming Pool
<b>DORMITORY</b>	Bed, Table, Chair, Hot shower, Air conditioner, Refrigerator, Mirror, Closet
<b>SSP/TESDA</b>	AFF-2005-037 / NTR-0613060167
<b>CAPACITY</b>	School 250, Dormitory 200 (1st dorm:100 + the second dorm 100)
<b>CURFEW</b>	11pm: Sun - Thursday / 1am: Fri - Saturday

