

## ZISA OP4500-08P 8 Port GPON Cassette OLT



ZISA OP4500-08P cassette OLT provides 8 downstream GPON ports, 8 uplink GE optical port and 8 GE electrical ports, with an expansion slot, which can access 2 10GE SFP+ ports. The 1U height can be easily installed and maintained to save space. The OP4500-08P adopts the industrial advanced technology, with powerful Ethernet services and QoS feature, supporting SLA and DBA. The splitting ratio up to 1:128, supporting different types of ONU in different networks, minimizing operators' investments.

### Specification

Attributes	OP4500-08P
Switching capacity	102Gbps
Throughput (IPv4/IPv6)	75.88MPPS
Ports	8*PON port · 8*GE FX+8*GE TX · 2*10GE SFP+
Power redundancy	Dual power supply. Can be double AC, double DC or AC+DC
Power supply	AC : Input 100~240V , 47~63Hz ; DC : Input -36V~-75V ;
Power consumption	≤85W
Outline dimensions (mm) (W*D*H)	440mm×44mm×380mm
Weight (in maximum configuration)	≤3kg
Environmental requirements	Working temperature : -15°C~55°C Storage temperature : -40°C~70°C Relative humidity : 10%~90% , no condensing

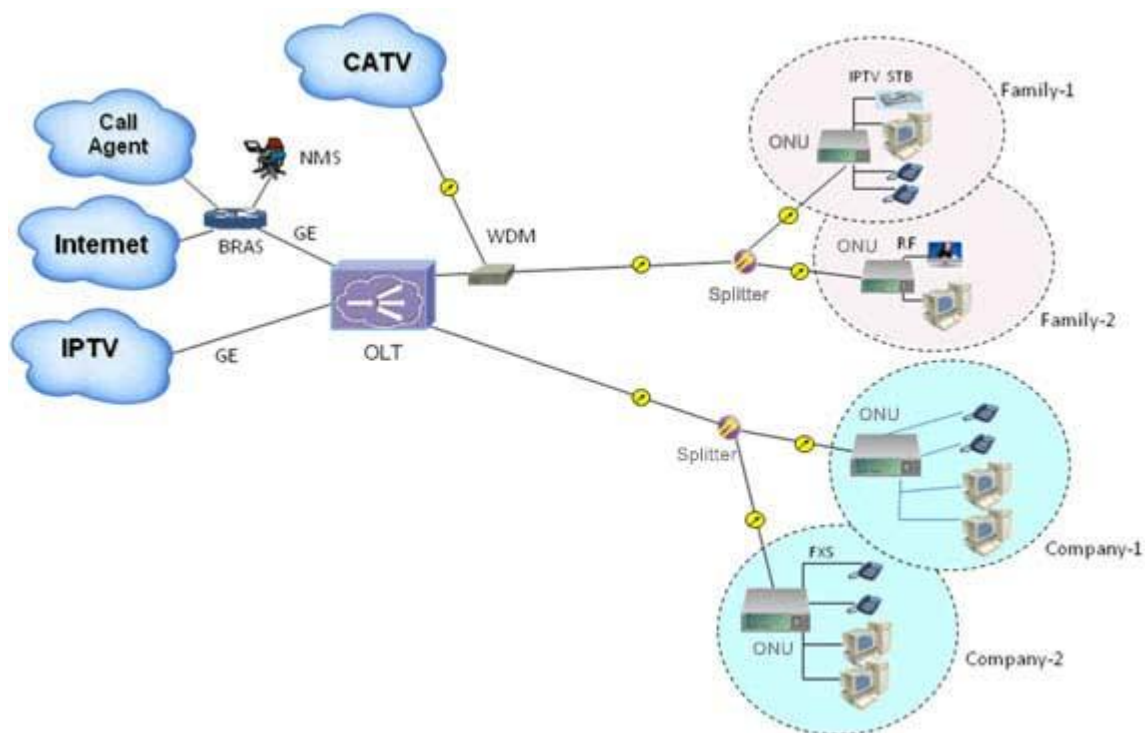
## Features

Attributes		OP4500-08P series
PON features	GPON	<p>Satisfy ITU -T standard</p> <p>TR-101 compliant solution for FTTx OLT applications</p> <p>With High Splitter rate support 64 ONU per port</p> <p>Up to 96 T-cont</p> <p>Maximum transmission distance of 20KM</p> <p>Support uplink FEC, downlink FEC(Forward Error Correction)</p> <p>ONU identifier authentication :SN /SN+PASSWD</p> <p>Bandwidth allocation mechanism</p> <p>5 types of T-CONT bandwidth</p> <p>Static Bandwidth Allocation</p> <p>Dynamic Bandwidth Allocation</p> <p>GPON feature parameter</p> <p>4096 port-IDs per GPON MAC (Downstream and Upstream)</p> <p>1024 Alloc -IDs per GPON MAC (Upstream )</p>
L2 features	MAC	<p>MAC Black Hole</p> <p>Port MAC Limit</p> <p>MAC Table Size 32K</p>
	VLAN	<p>4K VLAN entries</p> <p>Port-based/MAC-based/IP subnet-based VLAN</p> <p>Port-based QinQ and Selective QinQ (StackVLAN)</p> <p>VLAN Swap and VLAN Remark and VLAN Translate</p> <p>GVRP</p> <p>Based on ONU service flow VLAN add, delete, replace</p>
	Spanning tree protocol	<p>IEEE 802.1D Spanning Tree Protocol (STP)</p> <p>IEEE 802.1w Rapid Spanning Tree Protocol (RSTP)</p> <p>IEEE 802.1s Multiple Spanning Tree Protocol instances (MSTP)</p>
	Port	<p>Bi-directional bandwidth control</p> <p>Static link aggregation and LACP(Link Aggregation Control Protocol)</p> <p>Port mirroring and traffic mirroring</p>

Security features	User security	<p>Anti-ARP-spoofing</p> <p>Anti-ARP-flooding</p> <p>IP Source Guard create IP+VLAN+MAC+Port binding</p> <p>Port Isolation</p> <p>MAC address binds to port and port MAC address filtration</p> <p>IEEE 802.1x and AAA/Radius authentication</p> <p>TACACS+ authentication</p> <p>dhcp anti-attack flood attack automatic suppression</p> <p>ONU isolation control</p>
	Device security	<p>Anti-DOS attack(such as ARP, Synflood, Smurf, ICMP attack), ARP detection, worm and Msblaster worm attack</p> <p>SSHv2 Secure Shell</p> <p>SNMP v3 encrypted management</p> <p>Security IP login through Telnet</p> <p>Hierarchical management and password protection of users</p>
	Network security	<p>User-based MAC and ARP traffic examination</p> <p>Restrict ARP traffic of each user and force-out user with abnormal ARP traffic</p> <p>Dynamic ARP table-based binding</p> <p>Supports IP+VLAN+MAC+Port binding</p> <p>L2 to L7 ACL flow filtration mechanism on the 80 bytes of the head of user-defined packet</p> <p>Port-based broadcast/multicast suppression and auto-shutdown risk port</p> <p>URPF to prevent IP address counterfeit and attack</p> <p>DHCP Option82 and PPPoE+ upload user's physical location</p> <p>Plaintext authentication of OSPF, RIPv2 and MD5 cryptograph authentication</p>
IP routing	IPv4	<p>ARP Proxy</p> <p>DHCP Relay</p> <p>DHCP Server</p> <p>Static route</p>
	IPv6	<p>ICMPv6</p> <p>ICMPv6 redirection</p> <p>DHCPv6</p> <p>ACLv6</p> <p>Configured Tunnel</p> <p>6to4 tunnel</p> <p>IPv6 and IPv4 Tunnels</p>

Service features	ACL	<p>Standard and extended ACL</p> <p>Time Range ACL</p> <p>Packet filter providing filtering based on source/destination MAC address, source/destination IP address, port, protocol, VLAN, VLAN range, MAC address range, or invalid frame. System supports concurrent identification at most 50 service traffic</p> <p>Support packet filtration of L2~L7 even deep to 80 bytes of IP packet head</p>
	QoS	<p>Rate-limit to packet sending/receiving speed of port or self-defined flow and provide general flow monitor and two-speed tri-color monitor of self-defined flow</p> <p>Priority remark to port or self-defined flow and provide 802.1P, DSCP priority and Remark</p> <p>CAR(Committed Access Rate)、Traffic Shaping and flow statistics</p> <p>Packet mirror and redirection of interface and self-defined flow</p> <p>Super queue scheduler based on port and self-defined flow. Each port/flow supports 8 priority queues and scheduler of SP, WRR and SP+WRR.</p> <p>Congestion avoid mechanism, including Tail-Drop and WRED</p>
	Multicast	<p>IGMPv1/v2/v3</p> <p>IGMPv1/v2/v3 Snooping</p> <p>IGMP Filter</p> <p>MVR and cross VLAN multicast copy</p> <p>IGMP Fast leave</p> <p>IGMP Proxy</p> <p>PIM-SM/PIM-DM/PIM-SSM</p> <p>PIM-SMv6、PIM-DMv6、PIM-SSMv6</p> <p>MLDv2/MLDv2 Snooping</p>
	MPLS	NPLS LDP
Reliability	Loop protection	<p>EAPS and GERP (recover-time &lt;50ms)</p> <p>Loopback-detection</p>
	Link protection	<p>FlexLink (recover-time &lt;50ms)</p> <p>RSTP/MSTP (recover-time &lt;1s)</p> <p>LACP (recover-time &lt;10ms)</p> <p>BFD</p>
	Device protection	<p>VRRP host backup</p> <p>Double fault-tolerant backup of host program and configuration files</p> <p>1+1 power hot backup</p>
Maintenance	Network maintenance	<p>Telnet-based statistics</p> <p>RFC3176 sFlow</p> <p>LLDP</p> <p>802.3ah Ethernet OAM</p> <p>RFC 3164 BSD syslog Protocol</p> <p>Ping and Traceroute</p>
	Device management	<p>Command-line interface ( CLI ) , Console, Telnet</p> <p>System configuration with SNMPv1/v2/v3</p> <p>RMON (Remote Monitoring)1/2/3/9 groups of MIB</p> <p>NTP(Network Time Protocol)</p>

## Application



### ■ Contact us

#### **ZISA Corporation Limited**

Mail to : [sales@zisacom.com.cn](mailto:sales@zisacom.com.cn)

URL: <http://www.zisacom.com.cn>

Specifications are subject to change without notice.

Copyright © ZISA Corp. All rights reserved.

