

# ZISA OP158-B

4GE 11n WIFI VOIP CATV GPON HGU



## Description

GPON ONT OP158-B (4GE+1POTS+RF+Wi-Fi) is a new terminal level GPON ONT, which is a variety of FTTB \ FTTH \ FTTO accessing ONT published by ZISA for carrier-grade FTTH network applications. It can support pure data, Data +Voice, Data+ Voice+ WIFI and many other service accessing type. OP158-B ONT supports standard OMCI, can provide up to 1.25Gbps uplink and 2.5Gbps downlink high-speed transfer rate. It can fully meet carrier-grade FTTB\FTTH\FTTO equipment needs, working with our NGBN unified network management system. The full functionality of OP158-B can support:

## Specifications

- Full compatible with ITU-T G.984
- Support one POTS
- Support 4 GE auto-adapting Ethernet ports
- Support one CATV output
- Support one 802.11 n/b/g WiFi port
- Support OMCI and TR069 for remote management
- Support Web for local management
- Support Auto-negotiation and MDI/MDIX
- Support the Ethernet interface rate, working mode and flows control
- Support loopback at UNI
- Support packet filtering and anti-illegal message attack protection
- Support performance statistics of Ethernet lines
- Support VLAN tagged label processing, traffic classification and packet filtering, STP/RSTP etc.
- Support DHCP Option60 reporting the location information of the Ethernet interface
- Support PPPoE+ for accurate subscribers identification
- Support H.248 \ MGCP and SIP protocol

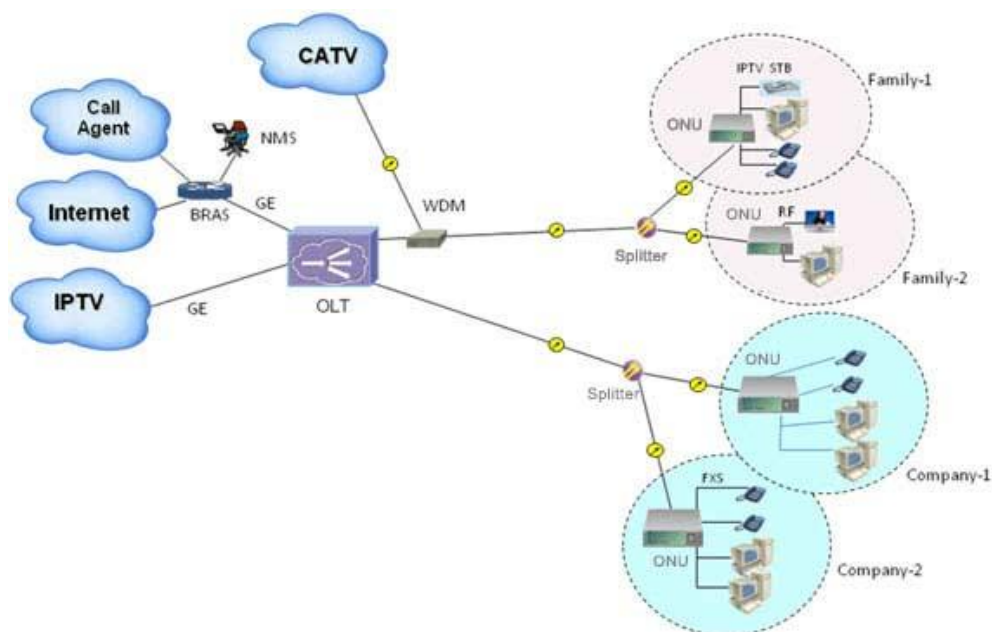
- Support IGMP Snooping
- Support AES-128
- CATV support turn on/off RF output remotely

## Performance

Attributes	OP158-B	
Power supply	12V, 1.5A	
Power consumption (full loaded)	≤9W	
Outline dimensions (mm) (W*D*H)	200mm(L) x 140mm(W) x 33mm (H)	
Weight (in maximum configuration)	≤0.5kg	
Environmental requirements	Operating temperature: 0 to 50°C Storage temperature: -40 to 85°C Operating humidity: 10% to 90%(Non-condensing) Storage humidity: 5% to 95%(Non-condensing)	
Ethernet	Standard	IEEE802.3 IEEE802.3au IEEE802.3x
	Interface	4x 10/100/1000BASE-T RJ45 Auto negotiation Auto MDI/MDIX
GPON	Speed	Downlink: 2.488Gbps Uplink: 1.244Gbps
	Connector	SC/APC, pigtail
	Standard	ITU-T G.984.2 , Class B+
	Power level	Downlink <ul style="list-style-type: none"> <li>– Wavelength: 1490nm</li> <li>– Sensitivity: -28dBm</li> <li>– Saturation: -8dBm</li> </ul> Uplink <ul style="list-style-type: none"> <li>– Wavelength: 1310nm</li> <li>– TX power: -1~4dBm</li> <li>– Rx Sensitivity: -27dBm</li> </ul>

		– Saturation Optical Power: -3dBm
	Fiber	G.652 Single Mode Fiber
WIFI	Antenna	2x2, 2dBi / 5dBi, internal or external antenna
	Standard	IEEE802.11b/g/n, 13*Channel
	Frequency	2.400 ~ 2.500 GHz
	EIRP	Max 25dBm
VoIP	REN	Max 5REN
	Connector	1x RJ11
	Ringing	65V RMS ringing voltage
RF	Connector	F-type Female 75ohm 3/8"
	Wavelength	1100~1600 nm
	Bandwidth	47MHz~875MHz
	TX Power	18dBmV/ch
	Output Return Loss	>14dB

## Solution



■ [Contact us](#)

**ZISA Corporation Limited**

Mail to : [sales@zisacom.com.cn](mailto:sales@zisacom.com.cn)

URL: <http://www.zisacom.com>

Specifications are subject to change without notice.

Copyright © ZISA Corp. All rights reserved.